

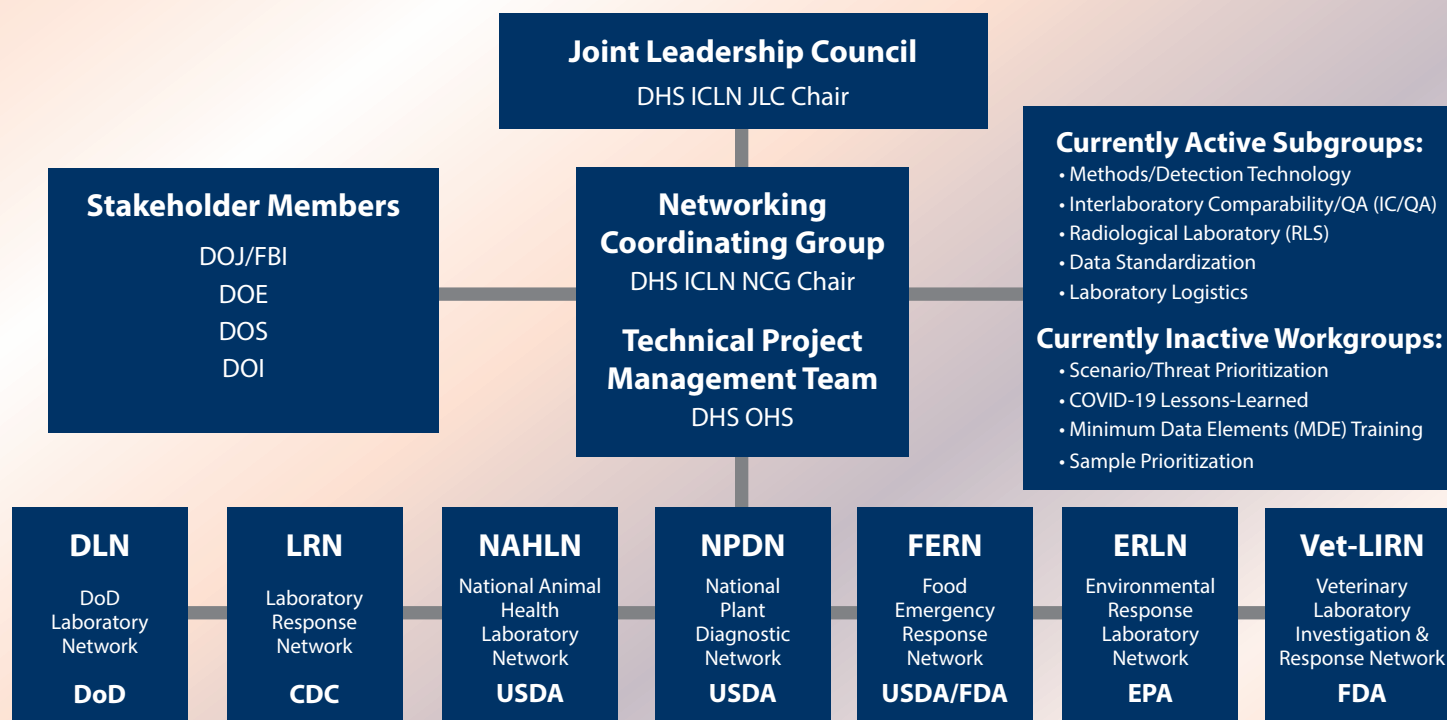


INTEGRATED CONSORTIUM OF LABORATORY NETWORKS



MISSION: The mission of the Integrated Consortium of Laboratory Networks (ICLN) is to coordinate federally sponsored analytical laboratory services for chemical, biological, radiological, and nuclear (CBRN) incidents. The ICLN does this through planning, identifying resources, providing laboratory surge capacity support, and defining key process steps for information exchange and data sharing during an incident. During CBRN incidents, the ICLN provides timely, credible, and interpretable data in support of surveillance, early detection, and effective consequence management.

The Integrated Consortium of Laboratory Networks is sponsored by the Department of Homeland Security/Office of Health Security



More than 450 distinct labs represented in member response networks

Two Major Coordinating Elements of the ICLN:

- 1. STRATEGIC LEVEL:** Joint Leadership Council (JLC) is made up of one senior policy member from each Department or Agency participating in the ICLN.
 - The JLC is charged with “assuring an appropriate strategy is in place to support an effective all-hazard laboratory response capability.”
- 2. OPERATIONAL LEVEL:** Network Coordinating Group (NCG) is composed of senior technical and program representatives.
 - The NCG is charged with “promoting enhanced commonality and integration of network functions.”
 - There are presently seven networks within the NCG: **DLN, CDC LRN, ERLN, FERN, NAHLN, NPDN, and Vet-LIRN.**



Network Name	Primary Network Focus
DLN: DoD Laboratory Network; Agency: DoD	Human clinical, animal (e.g., zoonotic surveillance), vector-borne (e.g., mosquito and tick surveillance), environmental, and food matrices of the military
ERLN: Environmental Response Laboratory Network; Agency: EPA	Environmental matrices
FERN: Food Emergency Response Network; Agencies: HHS/FDA and USDA/FSIS	Food consumed by humans and animal feeds
LRN: Laboratory Response Network; Agencies: HHS/CDC	Clinical specimens as well as environmental, water, and food samples
NAHLN: National Animal Health Laboratory Network; Agency: USDA	Animal clinical/live animals in the field
NPDN: National Plant Diagnostic Network; Agency: USDA	Plants/crops in the field
Vet-LIRN: Veterinary Laboratory Investigation & Response Network; Agencies: HHS/FDA	Regulatory compliance and safety of animal feeds and veterinary drugs by testing animal diagnostic samples

ICLN Tools

Portal: A secure, password-protected web portal that can be used by member networks on a day-to-day basis as well as during an incident.



*Federal laboratory partners can request an account by sending an email to ICLN@hq.dhs.gov.

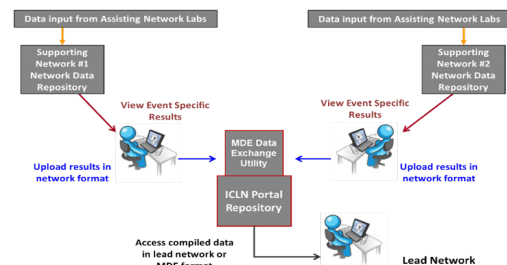
Combined Registry: A password-protected database that houses the Methods Registry, network proficiency testing data and schedules, and the training calendar.



The Combined Registry is a multi-function application and available through the ICLN Portal. It provides the ICLN community the ability to securely access and share Methods, Proficiency Testing, Training information, and schedules.

Data Exchange Utility

A secure online system that supports the exchange of laboratory results data in an agreed-upon standardized ICLN format, available through the ICLN Portal.

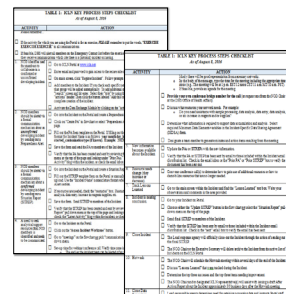


- Converts from native network formats to common MDE* format
- >10K record upload in <10 minutes
- 400K records searchable <4 minutes with 8 concurrent users

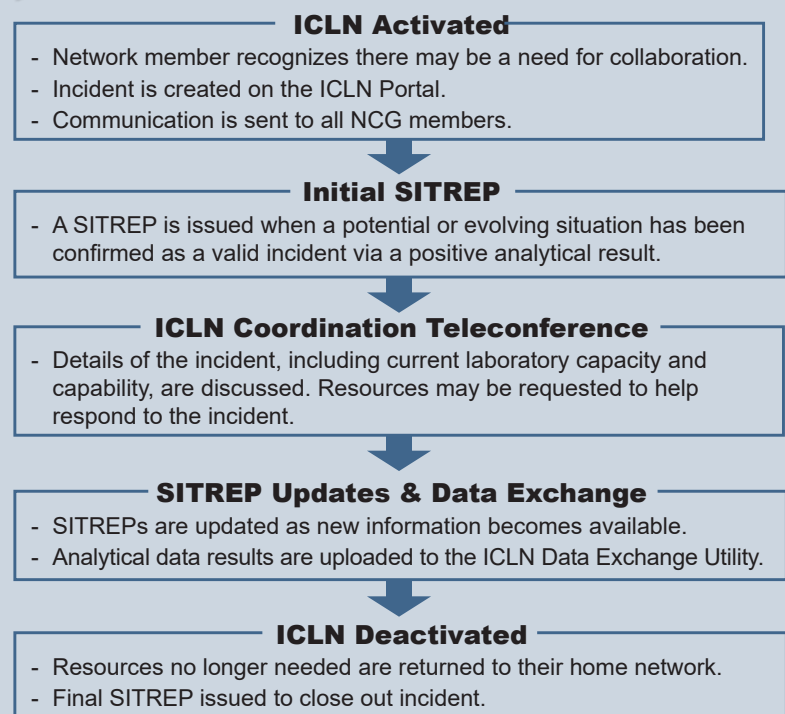
*MDE = Minimum Data Elements: A format developed by the Methods and IT subgroups comprising some 40 fields intended to encompass all attributes potentially associated with samples.

Standard Operating Procedure/ Key Process Steps Checklist:

Provides guidance on how to request assistance for capability/capacity support from fellow networks; describes the processes/procedures to communicate about ongoing incidents/events; simplifies data reporting between network program offices; and assists with returning resources back to their home network.



OPERATIONAL STEPS OF THE ICLN



—This process may vary slightly from incident to incident.—

ICLN Exercises

Completed ICLN Tabletop (TTX) and ILCE/Live Sample Exercises:

Monthly Exercises

Tabletop Exercises

Internetwork Laboratory Coordination Exercises

Interagency Exercises

ICLN COLLABORATION & COORDINATION

Tabletop Exercises (TTXs):

- B. anthracis (December 2008)
- Melamine in macaroni product (December 2008)
- H5N1 exercise (2009)
- B. anthracis inhalation (IBRD, July 2010)
- B. anthracis inhalation (October 2010)
- C. botulinum in food (October 2010)
- Sodium fluoroacetate in food (October 2010)
- Foot and Mouth Disease (March 2011)
- Rathyibacter Toxicus (September 2011)
- Rad TTX: 3 RDD (Denver, Chicago, Los Angeles) using Strontium-90 and Plutonium-238 (February 2012)
- Chemical-in-Milk/ChemR2 (August 2012)
- Foot and Mouth Disease in Milk (May 2013)
- Radiological IND (July 2013)
- Anthrax Validation Exercise (April, 2014)

- Cyclosarin Tabletop Exercise (September 2014)
- Nuclear Power Plant Tabletop Exercise (June 2015)
- Sodium Fluoroacetate Tabletop Exercise (December 2015)
- Cyanide/Ethyl Parathion/Strontium-90 Mixed Agent Tabletop Exercise (September 2017)
- Opioid Tabletop Exercise (September 2018)
- Biological/Radiological – Americium-241/Highly Pathogenic Avian Influenza (H5N1) (June 2022)
- Fourth Generation Agent Tabletop Exercise (Projected for March/April 2025)

Internetwork Laboratory Coordination Exercises (ILCEs) & Live Sample Exercises:

- BioRad2 Live Sample Exercise (January 2023)
- Fentanyl Live Sample Exercise (January 2024)

IN SUMMARY:

The ICLN delivers a coordinated consortium of networks that are:

- Aligned with national, departmental, and agency guidance, policies, and response mechanisms.
- Poised to deal with high consequence, low probability events by leveraging existing laboratory resource capability and capacity.

The ICLN provides an operational, cost-effective contribution to national security.

CONTACT INFORMATION

Email: ICLN@HQ.DHS.GOV
Public Website: <https://www.icln.org/>

